

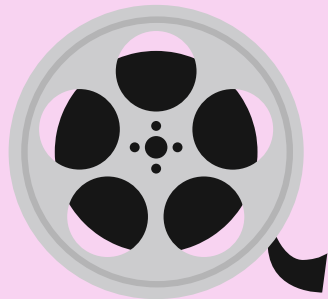


DAPHNEY MAWILA CV



ABOUT ME

University of Johannesburg (Lecturer & educational Psychologist)



CONTACT ME

011) 559 5239
(072) 257 4092
dmawila@uj.ac.za



RESEARCH INTERESTS

Research interests neuro-development disorders, learning disorders, resilience, cognitive assessments, test translation, and adaptation, learning styles, working memory, fluid intelligence and quantitative research studies.

EDUCATION

2016-(IN PROGRESS)

University of Johannesburg
Doctor Educationis Education (D.ed)

2012

University of Johannesburg
Magister Educationis (M.ed)

2011

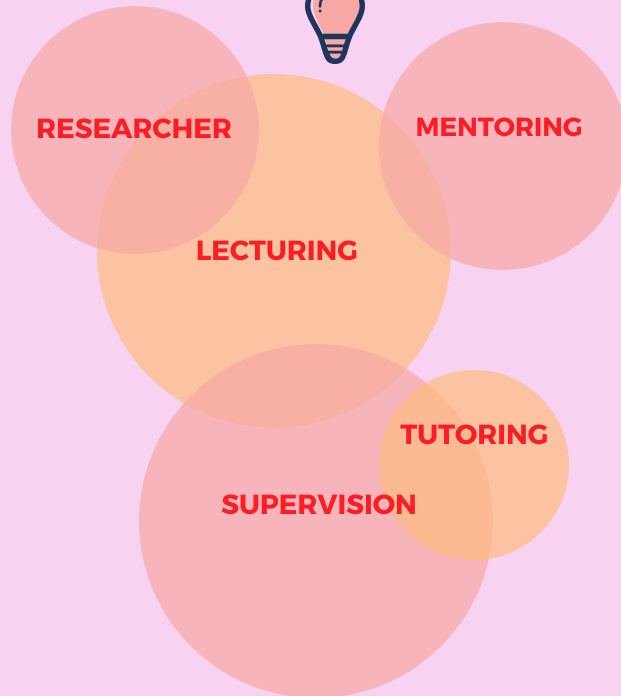
University of Johannesburg
Baccalaureus Educationis Honoribus (B.ed HONS)

2010

University of Johannesburg
Baccalaureus Educationis (B.ed)



SKILLS





PROFESSIONAL ASSOCIATION MEMBERSHIP

Registered as an Educational PSYCHOLOGIST with the HPCSA (HEALTH PROFESSIONS COUNCIL OF SOUTH-AFRICA) Reg no: PS 0122637.

Registered as a MEMBER with the PSYSSA (PSYCHOLOGICAL SOCIETY OF SOUTH AFRICA) Reg no:21312.

Registered as a PRACTITIONER with the BHF (BOARD OF HEALTHCARE FUNDERS) Reg no:0641537.

Registered as a MEMBER of SACE (SOUTH AFRICAN COUNCIL FOR EDUCATORS).

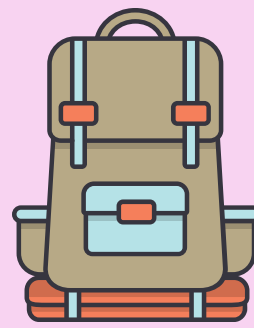


CONFERENCE CONTRIBUTIONS

Early Childhood Research and Development (Rhodes University - September 2012)

• PAPER PRESENTED: "Testing mathematics concepts in the foundation phase" Research Indaba (University of Johannesburg- October 2012)

• PAPER PRESENTED: "Testing mathematics concepts in the foundation phase"



CAREER HISTORY

2015-2017 LECTURER: University of Johannesburg-Educational Psychology Department

2014 ASSISTANT LECTURER: University of Johannesburg-Educational Psychology Department

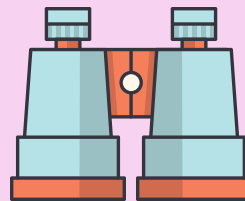
2013 INTERN EDUCATIONAL PSYCHOLOGIST: PsyCaD

2012 LECTURER: the University of Johannesburg- Department of Childhood Education

2011-2012 SCHOOL BASED RESEARCHER: Funda UJabule School

2010 MENTOR: University of Johannesburg

2008-2011 TUTOR: University of Johannesburg





TUITION EXPERIENCE (UNIVERSITY OF JOHANNESBURG)

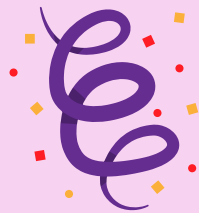
UNDERGRADUATE:

Education Studies 1A (Foundation Phase)
Education Studies 2B (Foundation Phase)
Education Studies 3B (Foundation Phase)
Education 2A (Senior Phase and FET)
Methodology: Support Role School Guidance and Support 2B



POSTGRADUATE:

PCCE: Life Orientation
Educational Theory B
Educational Psychology Research Project and research methodology



ACADEMIC OUTPUT ACADEMIC JOURNALS

* Dampier, D. & Mawila, D. (2012). Test items and translation: capturing early conceptual development in mathematics reliably?. South African Journal of Childhood Education | 2012 2(2): 35-57 | ISSN: 2223-7674

* Henning, E. Dampier, D. & Mawila, D. (2012). Simple language is the answer to 'difficult' assessment tests. Mail & Guardian newspaper.



RESEARCH PROJECT

Neuro-Developmental Disorders
research project

RESEARCH SUPERVISION

Number of honours students: 22



REFEREES

Dr Helen Dunbar-Krige
University of Johannesburg: Educational Psychology Senior lecturer
011 559 2673/0825726950
helenk@uj.ac.za

Professor Elizabeth Henning
University of Johannesburg: SARChi Chair
011 559 5102/072 405 7281
ehenning@uj.ac.za

Professor Lara Ragpot
University of Johannesburg: Childhood Education
011 559 5105/084 731 8789
lragpot@uj.ac.za

